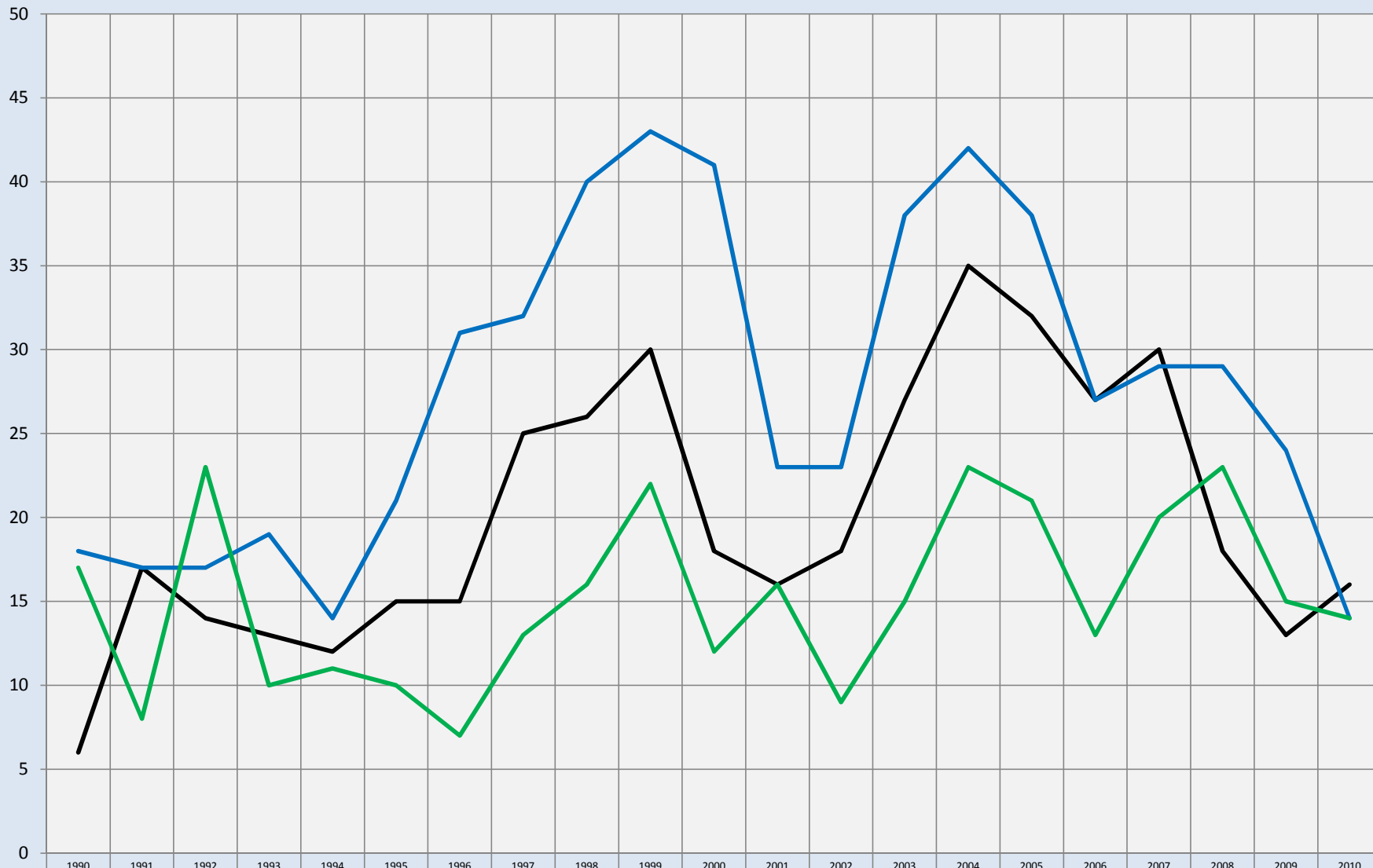


Boulder County Southeast Plains: Number of Sales Annually

All Recorded Sales: Data from Tax Records



— Large Houses	6	17	14	13	12	15	15	25	26	30	18	16	18	27	35	32	27	30	18	13	16
— Mid-Sized Houses	18	17	17	19	14	21	31	32	40	43	41	23	23	38	42	38	27	29	29	24	14
— Small Houses	17	8	23	10	11	10	7	13	16	22	12	16	9	15	23	21	13	20	23	15	14

Compiled by Agents for Home Buyers LLC

www.Agents4HomeBuyers.com

Sources: Metrolist Tax Data

Number of sales for large (2300-3000 sqft), mid-sized (1600-2300 sqft), & small (900-1600 sqft) houses . Basement sqft not included in calculations.