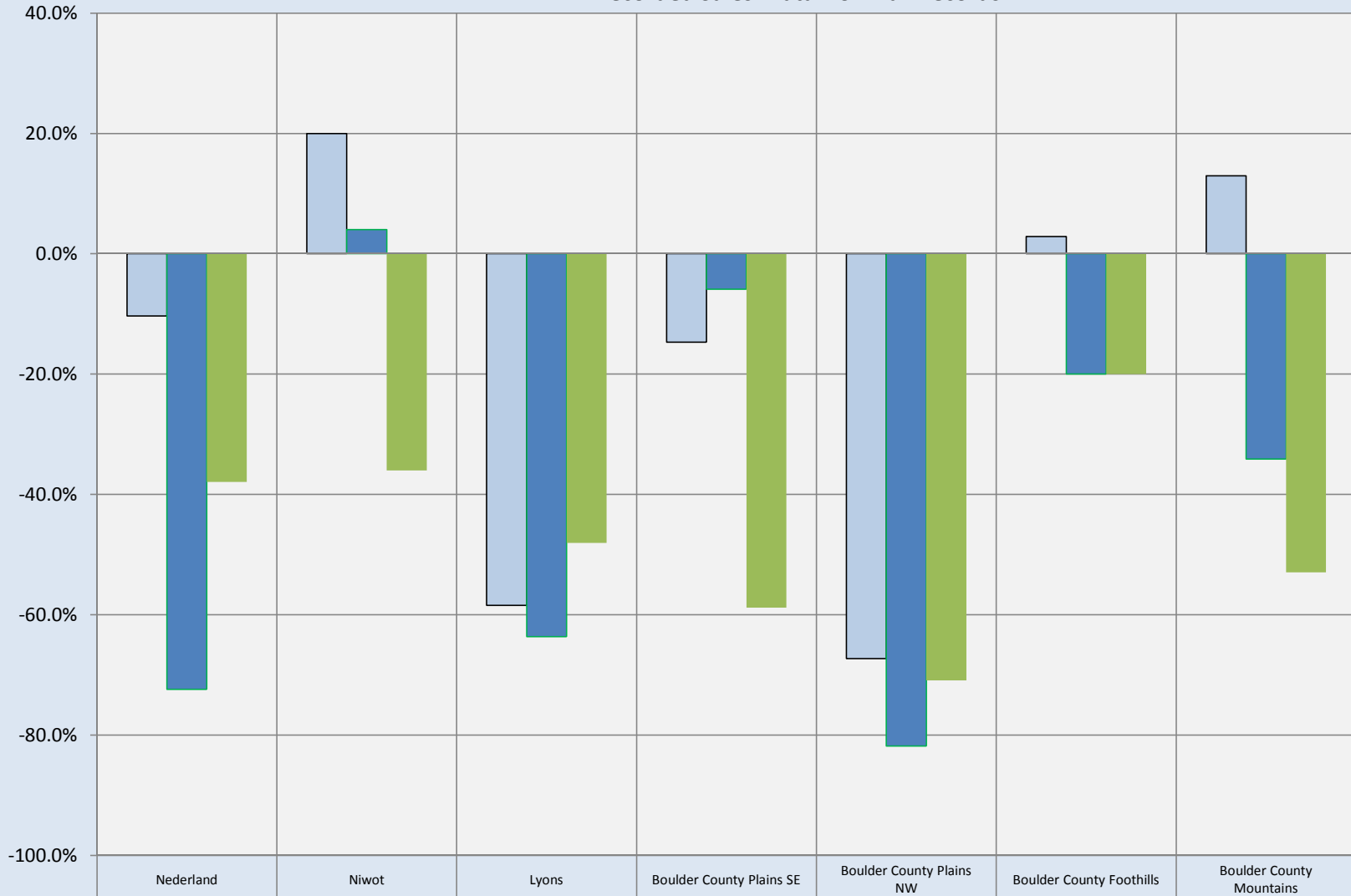


Number of Sales Mid-Sized Houses: 2008, 2009 & 2010 vs Average for 2004-2007

All Recorded Sales: Data from Tax Records



2008 vs Average 2004-2007	-10.3%	20.0%	-58.4%	-14.7%	-67.3%	2.9%	12.9%
2009 vs Average 2004-2007	-72.4%	4.0%	-63.6%	-5.9%	-81.8%	-20.0%	-34.1%
2010 vs Average 2004-2007	-37.9%	-36.0%	-48.1%	-58.8%	-70.9%	-20.0%	-52.9%

Compiled by Agents for Home Buyers LLC

www.Agents4HomeBuyers.com

Data: Metrolist Tax/MLS & IRES MLS

Based on sales of 1600-2300 sqft homes. Basement sqft not included in calculations.