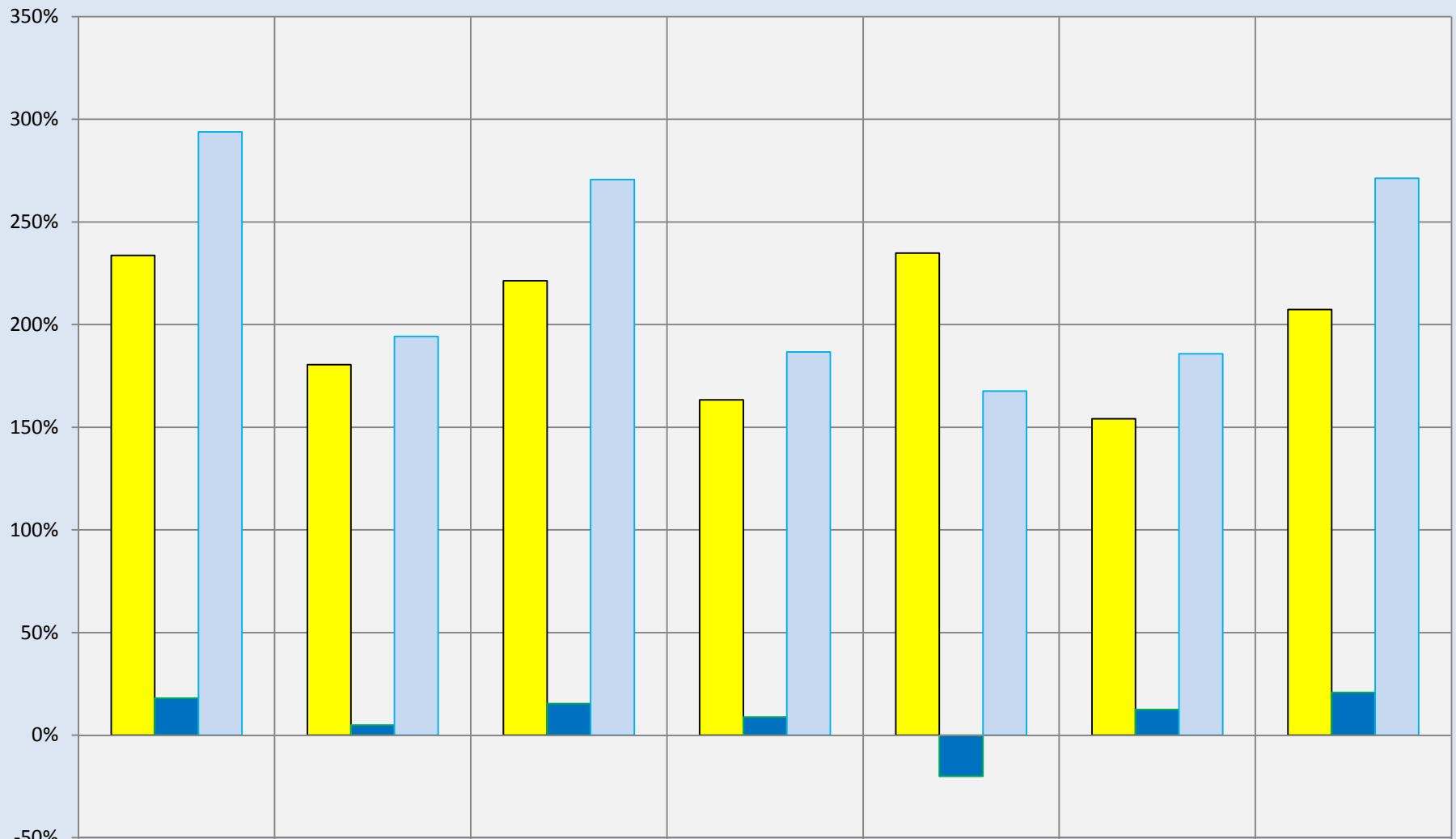


Long Term Price Appreciation: Small Houses

All Recorded Sales: Data from Tax Records



| | Nederland | Niwot | Lyons | Boulder County Plains SE | Boulder County Plains NW | Boulder County Foothills | Boulder County Mountains |
|------------------------|-----------|-------|-------|--------------------------|--------------------------|--------------------------|--------------------------|
| 1991/1992 to 2001/2002 | 234% | 180% | 221% | 163% | 235% | 154% | 207% |
| 2001/2002 to 2009/2010 | 18% | 5% | 15% | 9% | -20% | 12% | 21% |
| 1990/1991 to 2009/2010 | 294% | 194% | 271% | 187% | 168% | 186% | 271% |

Compiled by Agents for Home Buyers LLC

www.Agents4HomeBuyers.com

Data Source: Metrolist Tax & IRES MLS

Chart based on median price-per sqft of 900-1600 sqft homes. Basement sqft not included in calculations.