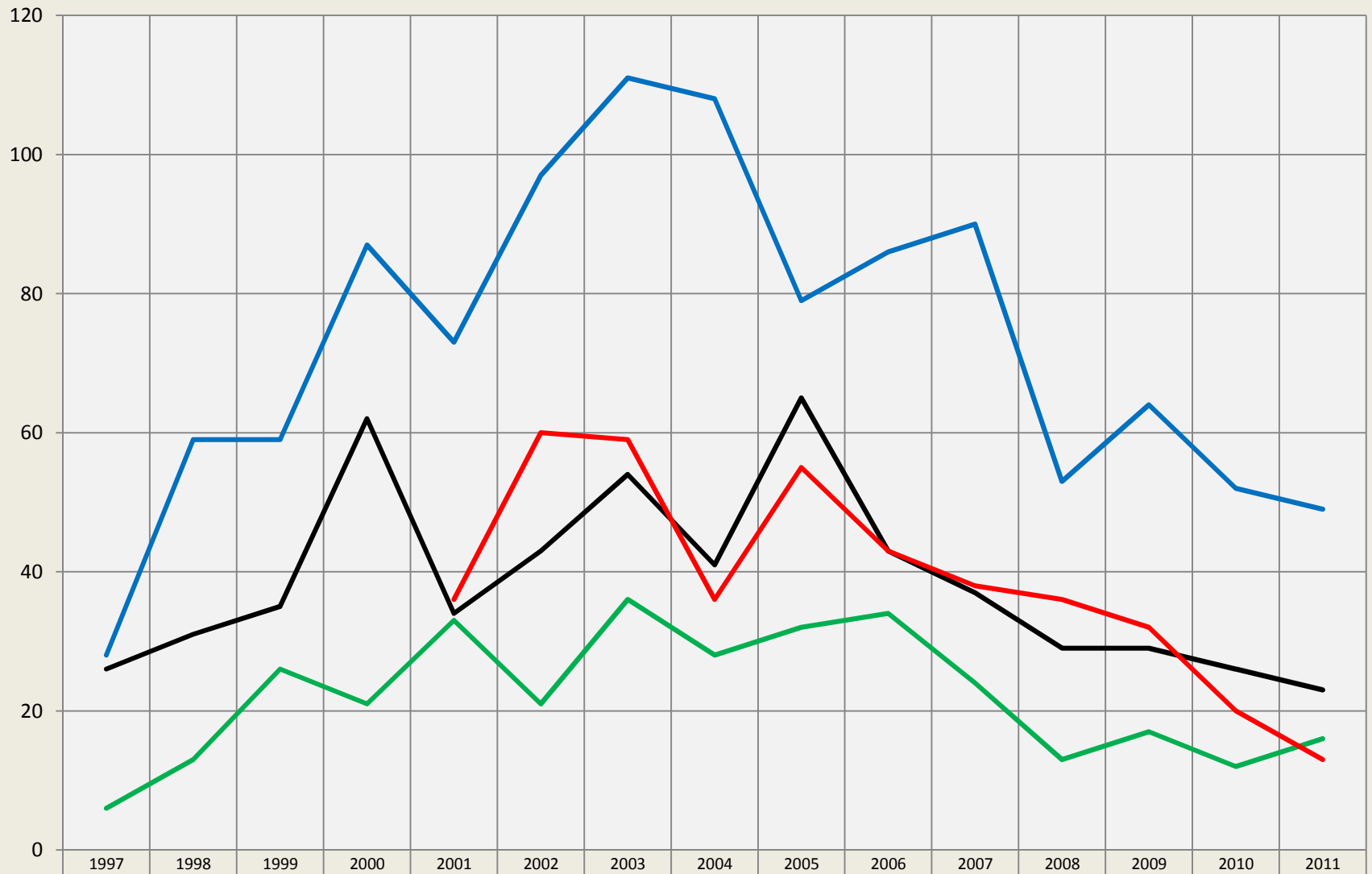


Superior Number of Sales Annually: All Home Sizes

Sales through MLS System Only: Excluding New Construction



— Large Houses (MLS Data)	26	31	35	62	34	43	54	41	65	43	37	29	29	26	23
— Mid-Sized Houses (MLS Data)	28	59	59	87	73	97	111	108	79	86	90	53	64	52	49
— Small Houses (MLS Data)	6	13	26	21	33	21	36	28	32	34	24	13	17	12	16
— Condos/TH (MLS Data)					36	60	59	36	55	43	38	36	32	20	13

Compiled by Agents for Home Buyers LLC

www.Agents4HomeBuyers.com

Data Sources: IRES & Metrolist MLS

Number of Sales of 2300-3000, 1600-2300, & 900-1600 sqft Houses and 800-1600 sqft Condos/Townhomes (not including basement).