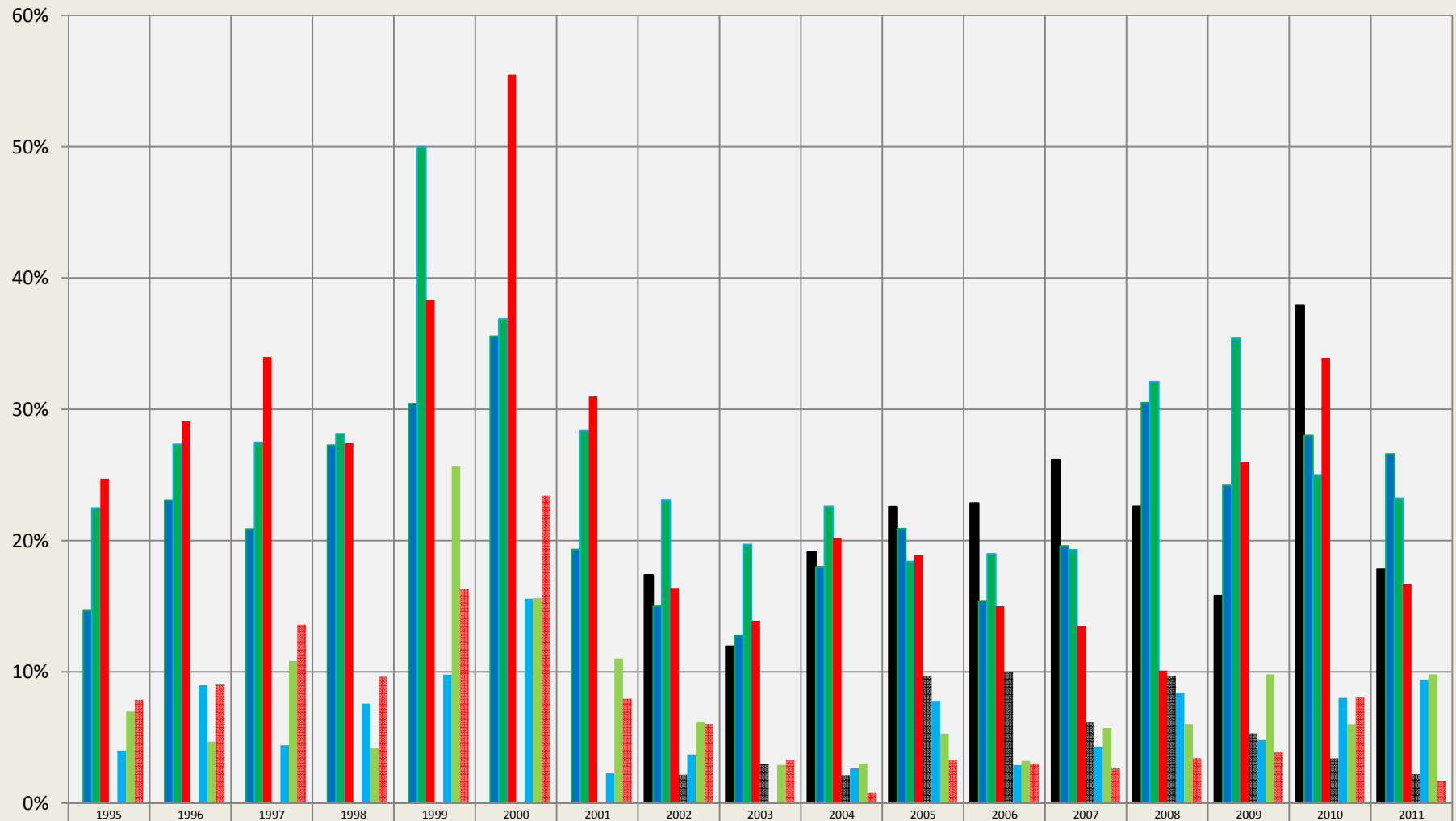


Lafayette: Houses/Condos Under Contract within 14 & 5 Days

Sales through MLS System Only: Excluding New Construction



	1995	1996	1997	1998	1999	2000	2001	2002	2003	2004	2005	2006	2007	2008	2009	2010	2011
■ Large Houses 14 Days								17.4%	11.9%	19.1%	22.6%	22.9%	26.2%	22.6%	15.8%	37.9%	17.8%
■ Mid-Sized Houses 14 Days	14.7%	23.1%	20.9%	27.3%	30.4%	35.6%	19.3%	15.0%	12.8%	18.0%	20.9%	15.4%	19.6%	30.5%	24.2%	28.0%	26.6%
■ Small Houses 14 Days	22.5%	27.3%	27.5%	28.1%	50.0%	36.9%	28.4%	23.1%	19.7%	22.6%	18.4%	19.0%	19.3%	32.1%	35.4%	25.0%	23.2%
■ Condo/Townhouse 14 Days	24.7%	29.1%	34.0%	27.4%	38.3%	55.5%	31.0%	16.4%	13.9%	20.2%	18.9%	15.0%	13.5%	10.1%	26.0%	33.9%	16.7%
■ Large Houses 5 Days								2.2%	3.0%	2.1%	9.7%	10.0%	6.2%	9.7%	5.3%	3.4%	2.2%
■ Mid-Sized Houses 5 Days	4.0%	9.0%	4.4%	7.6%	9.8%	15.6%	2.3%	3.7%	0.0%	2.7%	7.8%	2.9%	4.3%	8.4%	4.8%	8.0%	9.4%
■ Small Houses 5 Days	7.0%	4.7%	10.8%	4.2%	25.7%	15.6%	11.0%	6.2%	2.9%	3.0%	5.3%	3.2%	5.7%	6.0%	9.8%	6.0%	9.8%
■ Condo/Townhouse 5 Days	7.9%	9.1%	13.6%	9.6%	16.3%	23.4%	8.0%	6.0%	3.3%	0.8%	3.3%	3.0%	2.7%	3.4%	3.9%	8.1%	1.7%

Compiled by Agents for Home Buyers LLC

www.Agents4HomeBuyers.com

Data Source: IRES MLS

Time to Contract for 2300-3000, 1600-2300, & 900-1600 sqft Houses and 800-1600 sqft Condos/Townhomes (not including basement).